

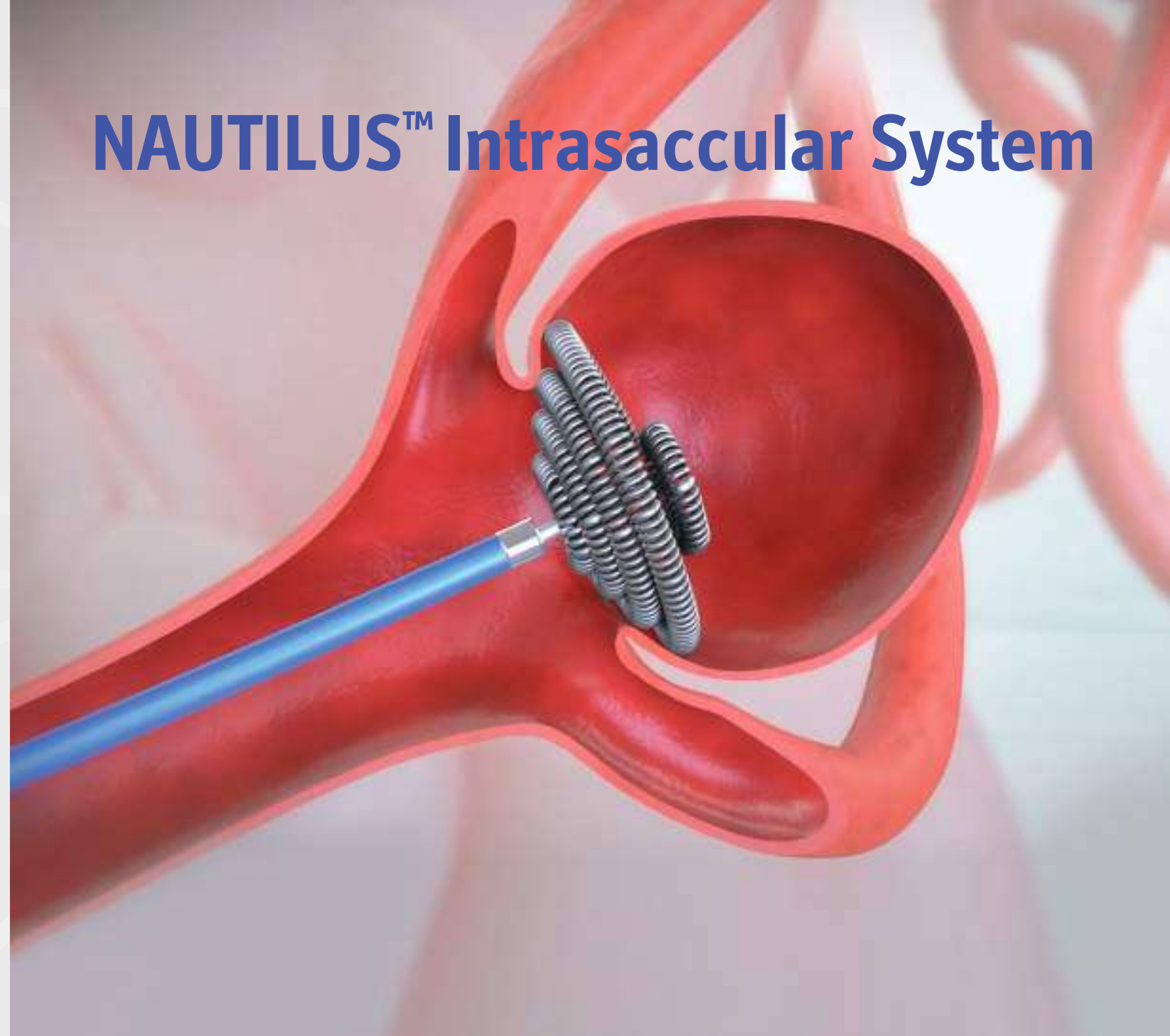
Nautilus Ordering Information

Catalog Number	Implant Diameter	OD (mm)	Length (mm)	Microcatheter Compatibility (Inch)
PRN-150-04	4 mm	3.5 - 4.0	33 ± 1	0.0165
PRN-150-05	5 mm	4.5 - 5.0	48 ± 1	0.0165
PRN-150-06	6 mm	5.5 - 6.0	67 ± 1	0.0165
PRN-150-07	7 mm	6.5 - 7.0	95 ± 1	0.0165

Nautilus Sizing Chart

Device Diameter	Aneurysm Neck	Aneurysm Dome
4 mm	< 3 mm	> 5 mm
5 mm	< 4 mm	> 6 mm
6 mm	< 5 mm	> 7 mm
7 mm	< 6 mm	> 8 mm

NAUTILUS™ Intrasaccular System



About us

EndoStream Medical is dedicated to developing safe and effective solutions that significantly improve clinical outcomes for patients suffering from brain aneurysms.



EndoStream Medical Ltd.
12 Hailan St. P.O.B. 265
Or Akiva, 3065201 Israel
Phone +972 4 8424810
info@endostream.com
www.endostream.com



MedNet EC-REP III GmbH,
Borkstrasse 10,
48163 Münster, Germany
Phone +49 0 251 32266-0
Fax +49 0 251 32266-22

LAB-775 Rev01

Flexibility in design. **Stability** in mind.

Nautilus™ Intrasaccular System

Designed for the treatment of cerebral aneurysm

The Nautilus is designed to provide a mechanical scaffold within the aneurysm neck to support coil embolization. Its self-conforming design maximizes neck coverage and promotes intrasaccular thrombosis and endothelial remodeling. Its unique structure seamlessly adapts to various neck anatomies, ensuring suitability for a wide range of patient cases.



SELF-CONFORMING STRUCTURE
adapts to various neck anatomies



MAXIMAL METAL COVERAGE
promotes intrasaccular thrombosis
& endothelial remodeling



NO INTRALUMINAL COMPONENTS



A-TRAUMATIC DEPLOYMENT



THIN DELIVERY PROFILE
reaches the smallest vessels by using
any .0165" microcatheter



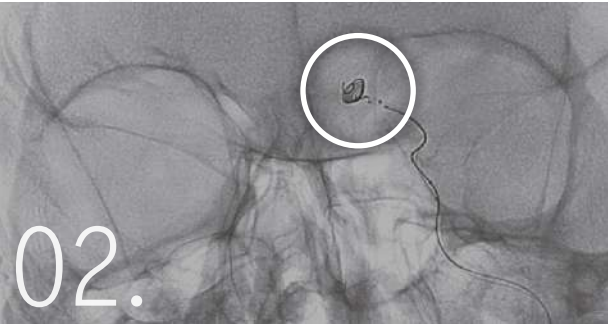
ENTIRE DEVICE IS RADIOPAQUE
maximizes visibility at all times

See it in action



BASELINE ANGIOGRAM

Showing an anterior communicating artery wide-neck aneurysm



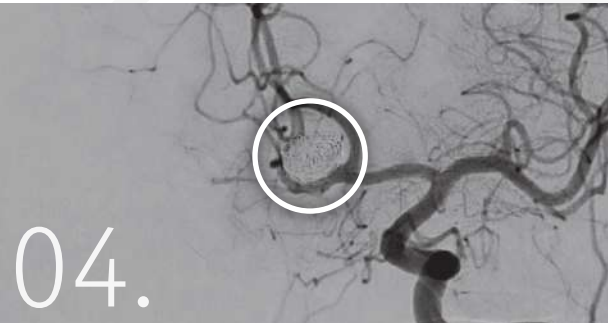
DEPLOYMENT OF NAUTILUS

The Nautilus is completely radiopaque, and its visible shape demonstrates how its flexible, adaptive structure self-conform to the aneurysm neck's anatomy



END-OF-PROCEDURE ANGIOGRAM

The acute status of the ruptured aneurysm leads to suboptimal coil packing, which will be compensated for by the Nautilus over time



3-MONTH FOLLOW-UP

The Nautilus's substantial metal coverage compensated for suboptimal coil packing and promoted in-sac thrombosis and endothelial reconstruction across the aneurysm neck, leading to complete obliteration of the aneurysm (Raymond Roy Class I)

TORNADO EU trial data

Study	TORNADO¹ (Nautilus™)	CERUS² (Contour™)	WEB-IT³ (WEB™)	CAFI⁴ (Neqstent™)
N	30	32	150	36
Ruptured aneurysms treated	47%	0%	6%	0%
Adequate occlusion (RR1+2 at f/u)	93%	84%	84%	78%
Re-treatment	0%	3%	9.8%	Not reported

1 Post-market EU core-lab adjudicated clinical trial. ClinicalTrials.gov Identifier: NCT04963933.

2 Liebig T, Killer-Oberpfalzer M, Gal G, Schramm P, Berlis A, Dorn F, Jansen O, Fiehler J, Wodarg F. The Safety and Effectiveness of the Contour Neurovascular System (Contour) for the Treatment of Bifurcation Aneurysms: The CERUS Study. Neurosurgery. 2022 Mar 1;90(3):270-277.

3 Arthur AS, Molyneux A, Coon AL for the WEB-IT Study investigators, et al The safety and effectiveness of the Woven EndoBridge (WEB) system for the treatment of wide-necked bifurcation aneurysms: final 12-month results of the pivotal WEB Intrasaccular Therapy (WEB-IT) Study Journal of NeuroInterventional Surgery 2019;11:924-930.

4 Liebig T, Gal G, O Kelly C, Wodarg F, Killer-Oberpfalzer M, Ozpeynirci Y, Bester M, Tsogkas I, Psychogios MN, Jansen O, Fiehler J. Neqstent coil-assisted flow diverter (NQS) for the treatment of bifurcation aneurysms: the coil-assisted flow diversion safety and performance study (CAFI). J Neurointerv Surg. 2023 Jul 7;jnis-2022-020056.