



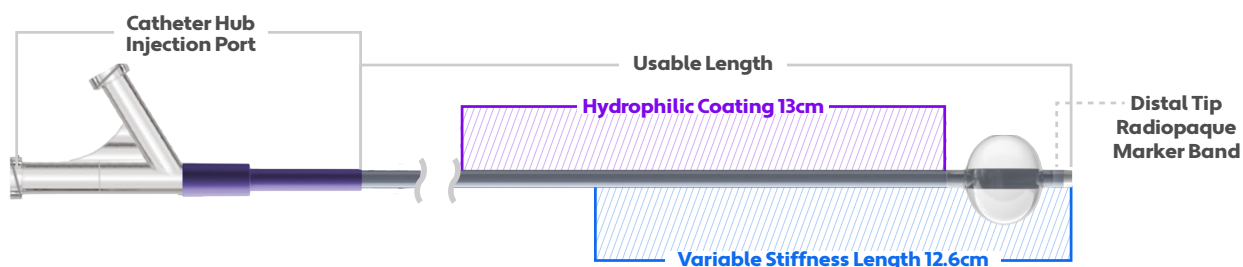
# I am Walrus.

I'm a balloon guide catheter specifically designed for stroke patients. Before I came along, balloon-based variable stiffness catheters weren't used all that often, because all manner of technological constraints stood in the way. I'm here to change that.



## A critical step forward in balloon guide catheter technology.

My particular specifications are unique in this space—which means I'm ideally positioned to serve stroke patients and the caregivers who treat them worldwide.



French Designation <b>8F+</b>	Tip Shape <b>Straight</b>	Usable Length <b>90cm, 95cm</b>	Guidewire Compatibility <b>0.035 - 0.038in</b>
----------------------------------	------------------------------	------------------------------------	---

### 0.087" ID

I can accommodate market-leading large bore catheters, maximizing clot capture and improving delivery for the most complex therapies.

### 0.110" OD

Despite my large inner diameter, my outer diameter is small enough to fit in most 8F sheaths—making me suitable to accommodate market-leading closure devices.

### 11.1mm Balloon

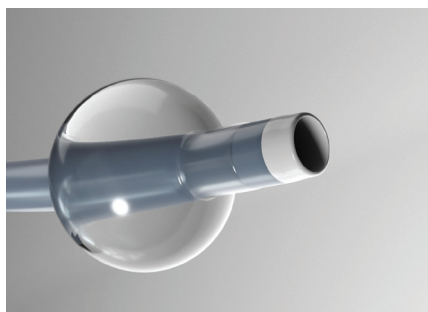
Compliant and reliable, my polyurethane balloon diameter is designed to conform to the vessel wall for proximal flow control.

### Accessories

- 1mL Inflation Syringe
- Hub Extension
- Peel-away Introducer
- 3 Way Stopcock

## Here's how I deliver.

My revolutionary construction means I'm just as suited to facilitate the insertion and guidance of an intravascular catheter as I am in my role as a conduit for clot retrieval devices. In short, I combine flow control, trackability, support, and access into one revolutionary solution.



### HOW I'M DIFFERENT

#### Let's start with my size.

I have an 0.087-inch ID, which pretty much blows other balloon guide catheters out of the water. And my large yet highly trackable size means I'm particularly effective in supporting mechanical thrombectomy.

#### Attributes:

- Suitable for current market-leading catheters
- Improved delivery for even the most complex therapies

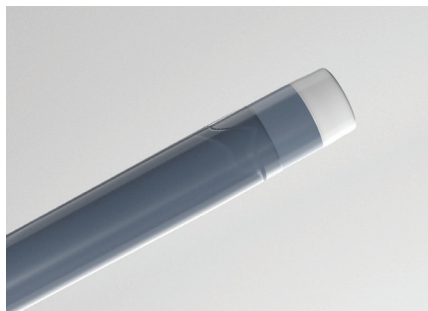
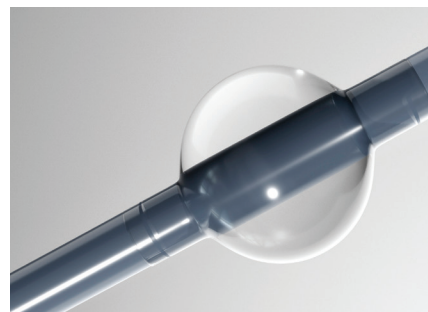
### HOW I'M DIFFERENT

#### I get even bigger.

My balloon component is built for superior performance and enhanced compliance. Not only am I highly reliable in the face of critical clots—I adapt to serve my surroundings so I can suit physician needs from start to finish.

#### Attributes:

- Diameter up to 11.1mm designed to conform to the vessel wall for proximal flow control
- Dual radiopaque distal marker bands to enable visibility under fluoroscopy



### HOW I'M DIFFERENT

#### Agility is my middle name (no, really).

Above all, I'm designed to flex and move. With my kink-resistant construction, I can shimmy and twist through the most challenging of neurovascular procedures, all the while staying the course with my monolithic wall and material transitions.

#### Attributes:

- Proximal support while maintaining distal flexibility
- Superior trackability and support

We're Q'Apel, a medical technology company that creates solutions. More specifically, we design novel access device technology for vascular interventions and unmet clinical needs. Because in the precious seconds that surround a stroke emergency, clinicians need technology that delivers. That's where we come in.

Get in touch | [info@qapelmedical.com](mailto:info@qapelmedical.com) | [linkedin.com/company/q-apel-medical](https://www.linkedin.com/company/q-apel-medical)

©2021. Q'Apel Medical, Inc. All rights reserved. MKT 00305.F

### REF

BG8087-090

BG8087-095

### Q'Apel Medical

46708 Lakeview Blvd

Fremont, CA 94538

510.738.6255

[qapelmedical.com](https://www.qapelmedical.com)